

Husky Ladder Flange Out

In Aluminum, Steel

Selection Tables
Numbering System
Loading Tables

Pg. 29
Pg. 30
Pgs. 31—37

**CONFIDENTIAL INFORMATION
FOR INTERNAL USE ONLY**



The upper flange may have an
extruded lip, a bent lip, or no
lip at all

Selection Tables

NEMA Class	Load	Support Span	Aluminum				Steel			
			Siderail Height (in.)	Load Depth	Top Flange Width	Prefix	Siderail Height (in.)	Load Depth	Top Flange Width	Prefix
8A	50lbs/ft	8ft	4.50 6.00	3.50 5.00	.75 1.00	A()BB A()PB1	4.00 6.00	3.00 5.00	1.25 1.00	S()B2 S()P61
8B	75lbs/ft	8ft	4.50 6.00	3.50 5.00	.75 1.00	A()BB A()PB1	4.00 6.00	3.00 5.00	1.25 1.00	S()B2 S()P61
8C	100lbs/ft	8ft	4.50 6.00	3.50 5.00	.75 1.00	A()BB A()PB1	4.00 6.00	3.00 5.00	1.25 1.00	S()B2 S()P61
12A	50lbs/ft	12ft	4.50 6.00	3.50 5.00	.75 1.00	A()BB A()PB1	4.00 6.00	3.00 5.00	1.25 1.00	S()B2 S()P61
12B	75lbs/ft	12ft	4.50 6.00	3.50 5.00	.75 1.00	A()BB A()PB1	4.00 6.00	3.00 5.00	1.25 1.00	S()B2 S()P61
12C	100lbs/ft	12ft	4.50 6.00	3.50 5.00	1.50 1.00	A()CA A()PB1	4.50 6.00 7.00	3.50 5.00 6.00	1.25 .75 .75	S()FC S()P61 S()PD7
12C+	100+lbs/ft	12ft	4.50 6.00	3.50 5.00	1.50 1.25	A()CA A()PC	4.50 6.00 7.00	3.50 5.00 6.00	1.25 1.00 .75	S()FC S()P61 S()PD74
16A	50lbs/ft	16ft	4.50 6.00	3.50 5.00	1.50 1.75	A()CA A()EA	4.50 6.25	3.50 5.25	1.75 1.75	S()CD S()EB
16B	75lbs/ft	16ft	4.50 6.00	3.50 5.00	1.50 1.75	A()CA A()EA	4.50 6.25	3.50 5.25	1.75 1.75	S()CD S()EB
16C	100lbs/ft	16ft	6.00	5.00	1.75	A()E	6.25 7.00	5.25 6.00	1.75 1.75	S()EB S()EB7
20A	50lbs/ft	20ft	4.50 6.00	3.50 5.00	1.50 1.75	A()CA A()EA	4.50 6.25 7.00	3.50 5.25 6.00	1.75 1.75 1.75	S()CD S()EB S()EB7
20B	75lbs/ft	20ft	6.00 7.00	5.00 6.00	1.75 1.75	A()E A()E7	6.25 7.00	5.25 6.00	1.75 1.75	S()EB S()EB7
20C	100lbs/ft	20ft	6.00 7.00	5.00 6.00	1.75 1.75	A()E1 A()E71	6.25 7.00	5.25 6.00	1.75 1.75	S()ED S()EC7
20C+	100+lbs/ft	20ft	6.00 7.00	5.00 6.00	1.75 1.75	A()E1 A()E71	6.25 7.00	5.25 6.00	1.75 1.75	S()ED S()EC7
24B+	75+lbs/ft	24ft					6.25	5.25	1.75	S()ED

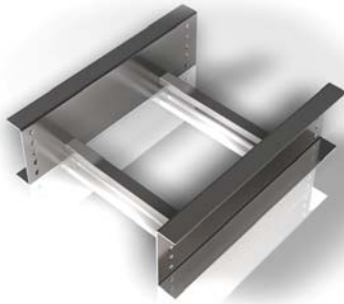
Husky Ladder has the exclusive Thru-Weld construction—this completely welds rungs to the outside of the rails for optimum structural integrity and reduced side rail rotation.



For more information or to order, call 1-800-277-4810 or visit www.mphusky.com.

Numbering System

A9BB-24-144				
A	9	BB-	24-	144
Material	Rung Spacing	Tray Type	Width in Inches	Length in Inches
Materials: A=Aluminum S=HDGAF Steel	Rung Spacing: 6" 9" 12" 18"	Tray Types: Aluminum BB, CA, EA, PB1, PC, E, E1, E7, E71 Steel B2, FC, CD, EB, ED, P61, PD4, PD7, PD74, EB7, EC7	Widths: 6" 9" 12" 18" 24" 30" 36"	Lengths: BB, PC, B2, FC, P61, PD4, PD7, PD74 available in 10' (120") 12' (144") only All others available in 10' (120"), 12' (144"), 20' (240") & 24' (288")



Other Technical Data

Depth:

4, 6, and 7

Fittings:

12, 24, or 36 inch standard radii (See Section 9 for details)

Splice Plates:

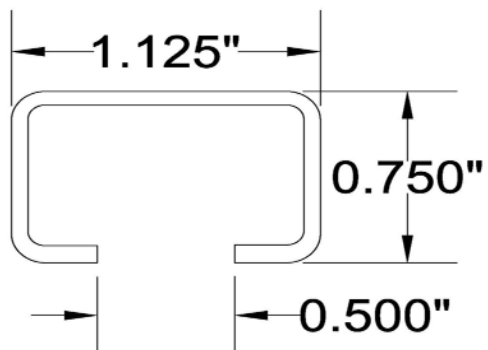
Straight sections and fittings are supplied with splice plates and hardware. (See Section 10 for details)

Safety Factor:

1.5 NEMA Standard

(For other tray sizes or specifications, please consult the factory)

Rung Dimensions



Loading Tables for Aluminum Lad-

A () BB Use ALBB fittings

NEMA 12B/CSA C



COVER BAR CLAMP: HC-W-BA

Span (ft.)	4		6		8		10		12	
Width (in.)	Load	Defl	Load	Defl	Load	Defl	Load	Defl	Load	Defl
6	675	0.14	300	0.32	169	0.57	108	0.89	75	1.28
9	662*	0.14	300	0.32	169	0.57	108	0.89	75	1.28
12	497*	0.10	300	0.32	169	0.57	108	0.89	75	1.28
18	331*	0.07	300	0.32	169	0.57	108	0.89	75	1.28
24	248*	0.05	248*	0.27	169	0.57	108	0.89	75	1.28
30	199*	0.04	199*	0.21	169	0.57	108	0.89	75	1.28
36	166*	0.03	166*	0.18	169	0.57	108	0.89	75	1.28

STS. E-63A / FITT. E-62A2 / RUNG E-1A2 / (E-1A) 18" RS / TIG WELD

ALUM: CA2F (FLANGED), CA2C (CORRUGATED SOLID), CA2S (FLAT SOLID), CA2V (CORRUGATED VENTILATED)
 STAINLESS STEEL: 304SS C42F (FLANGED), C42S (FLAT SOLID) / 316SS C62F (FLANGED), C62S (FLAT SOLID)

UL EGC AMPERAGE RATING: STRAIGHTS = 1200 AMPS / FITTINGS 1000 AMPS

A () CA2 Use ALCA2 fittings

NEMA 20A, 16B, 12C+ /CSA D



COVER BAR CLAMP: HC-W-CA

Span (ft.)	12		14		16		18		20	
Width (in.)	Load	Defl	Load	Defl	Load	Defl	Load	Defl	Load	Defl
6	139	1.63	102	2.22	78	2.90	62	3.67	50	4.53
9	139	1.63	102	2.22	78	2.90	62	3.67	50	4.53
12	139	1.63	102	2.22	78	2.90	62	3.67	50	4.53
18	139	1.63	102	2.22	78	2.90	62	3.67	50	4.53
24	139	1.63	102	2.22	78	2.90	62	3.67	50	4.53
30	139	1.63	102	2.22	78	2.90	62	3.67	50	4.53
36	139	1.63	102	2.22	78	2.90	62	3.67	50	4.53

STS. E-75A / FITT. E-75A2 / RUNG E-1A2 / (E-1A) 18" RS / TIG WELD

ALUM: CA4F (FLANGED), CA4C (CORRUGATED SOLID), CA4S (FLAT SOLID), CA4V (CORRUGATED VENTILATED)
 STAINLESS STEEL: 304SS C44F (FLANGED), C44S (FLAT SOLID) / 316SS C64F (FLANGED), C64S (FLAT SOLID)

UL EGC AMPERAGE RATING: STRAIGHTS = 1200 AMPS / FITTINGS 1200 AMPS

A () PB1 Use ALPB1 fittings

NEMA 12C



COVER BAR CLAMP: HC-W-PB1

Span (ft.)	4		6		8		10		12	
Width (in.)	Load	Defl	Load	Defl	Load	Defl	Load	Defl	Load	Defl
6	981	0.09	436	0.20	245	0.36	157	0.56	109	0.80
9	818*	0.07	436	0.20	245	0.36	157	0.56	109	0.80
12	688*	0.06	436	0.20	245	0.36	157	0.56	109	0.80
18	459*	0.04	436	0.20	245	0.36	157	0.56	109	0.80
24	344*	0.03	344*	0.16	286	0.39	157	0.56	109	0.80
30	199*	0.02	199*	0.09	199*	0.29	157	0.56	109	0.80
36	166*	0.02	166*	0.08	166*	0.24	157	0.56	109	0.80

STS. E-128A / FITT. E-127A / RUNG E-1A2 / (E-1A) 18" RS / TIG WELD

ALUM: CA2F (FLANGED), CA2C (CORRUGATED SOLID), CA2S (FLAT SOLID), CA2V (CORRUGATED VENTILATED)
 STAINLESS STEEL: 304SS C42F (FLANGED), C42S (FLAT SOLID) / 316SS C62F (FLANGED), C62S (FLAT SOLID)

UL EGC AMPERAGE RATING: STRAIGHTS = 1200 AMPS / FITTINGS 1200 AMPS

Corrugated Covers (C) & (V) are for straight sections and vertical fittings ONLY

NOTE: ALL ALUM. 36" WIDE AND WIDER STRAIGHT SECTIONS WITH 18" RUNG SPACING AND ALL 36" WIDE FITTINGS WILL GET THE HEAVY E-1A RUNG. ALL 30" AND WIDER VERTICAL OUTSIDE BENDS WILL ALSO GET THE E-1A RUNG. THIS HAS BEEN PROGRAMMED AND QUOTE DEPARTMENT DOESN'T NEED TO USE A RUNG CODE.

Loading Tables for Aluminum Lad-

A (C) PC Use ALPC fittings

NEMA 12C+



Span (ft.)	4		6		8		10		12	
Width (in.)	Load	Defl	Load	Defl	Load	Defl	Load	Defl	Load	Defl
6	1143	0.10	508	0.22	286	0.39	183	0.61	127	0.87
9	818*	0.07	508	0.22	286	0.39	183	0.61	127	0.87
12	688*	0.06	508	0.22	286	0.39	183	0.61	127	0.87
18	459*	0.04	459*	0.20	286	0.39	183	0.61	127	0.87
24	344*	0.03	344*	0.15	286	0.39	183	0.61	127	0.87
30	199*	0.02	199*	0.09	199*	0.27	183	0.61	127	0.87
36	166*	0.02	166*	0.07	166*	0.23	166*	0.55	127	0.87

STS. E-126A / FITT. E-127A / RUNG E-1A2 / (E-1A) 18" RS / TIG WELD

COVER BAR CLAMP: HC-W-PB2

ALUM: CA2F (FLANGED), CA2C (CORRUGATED SOLID), CA2S (FLAT SOLID), CA2V (CORRUGATED VENTILATED)
STAINLESS STEEL: 304SS C42F (FLANGED), C42S (FLAT SOLID) / 316SS C62F (FLANGED), C62S (FLAT SOLID)

UL EGC AMPERAGE RATING: STRAIGHTS = 1200 AMPS / FITTINGS 1200 AMPS

A (C) EA Use ALE1 fittings

NEMA 20A+, 16C, 12C+/CSA D



Span (ft.)	12		14		16		18		20	
Width (in.)	Load	Defl	Load	Defl	Load	Defl	Load	Defl	Load	Defl
6	192	0.83	141	1.12	108	1.47	85	1.86	69	2.29
9	192	0.83	141	1.12	108	1.47	85	1.86	69	2.29
12	192	0.83	141	1.12	108	1.47	85	1.86	69	2.29
18	192	0.83	141	1.12	108	1.47	85	1.86	69	2.29
24	192	0.83	141	1.12	108	1.47	85	1.86	69	2.29
30	192	0.83	141	1.12	108	1.47	85	1.86	69	2.29
36	166*	0.72	141	1.12	108	1.47	85	1.86	69	2.29

STS. E-78A2 / FITT. E-18A / RUNG E-1A2 / (E-1A) 18" RS / TIG WELD

COVER BAR CLAMP: HC-W-EA

ALUM: CA3F (FLANGED), CA3C (CORRUGATED SOLID), CA3S (FLAT SOLID), CA3V (CORRUGATED VENTILATED)
STAINLESS STEEL: 304SS C43F (FLANGED), C43S (FLAT SOLID) / 316SS C63F (FLANGED), C63S (FLAT SOLID)

UL EGC AMPERAGE RATING: STRAIGHTS = 1200 AMPS / FITTINGS 1600 AMPS

A (C) E Use ALE1 fittings

NEMA 20B+, 16C+/CSA E



Span (ft.)	12		14		16		18		20	
Width (in.)	Load	Defl	Load	Defl	Load	Defl	Load	Defl	Load	Defl
6	236	1.05	174	1.42	132	1.87	105	2.35	85	2.90
9	236	1.05	174	1.42	132	1.87	105	2.35	85	2.90
12	236	1.05	174	1.42	132	1.87	105	2.35	85	2.90
18	236	1.05	174	1.42	132	1.87	105	2.35	85	2.90
24	236	1.05	174	1.42	132	1.87	105	2.35	85	2.90
30	199*	0.89	174	1.42	132	1.87	105	2.35	85	2.90
36	166*	0.74	166*	1.36	132	1.87	105	2.35	85	2.90

STS. E-18A2 / FITT. E-18A / RUNG E-1A2 / (E-1A) 18" RS / TIG WELD

COVER BAR CLAMP: HC-W-E

ALUM: CA3F (FLANGED), CA3C (CORRUGATED SOLID), CA3S (FLAT SOLID), CA3V (CORRUGATED VENTILATED)
STAINLESS STEEL: 304SS C43F (FLANGED), C43S (FLAT SOLID) / 316SS C63F (FLANGED), C63S (FLAT SOLID)

UL EGC AMPERAGE RATING: STRAIGHTS = 1600 AMPS / FITTINGS 1600 AMPS

Corrugated Covers (C) & (V) are for straight sections and vertical fittings ONLY

NOTE: ALL ALUM. 36" WIDE AND WIDER STRAIGHT SECTIONS WITH 18" RUNG SPACING AND ALL 36" WIDE FITTINGS WILL GET THE HEAVY E-1A RUNG. ALL 30" AND WIDER VERTICAL OUTSIDE BENDS WILL ALSO GET THE E-1A RUNG. THIS HAS BEEN PROGRAMMED AND QUOTE DEPARTMENT DOESN'T NEED TO USE A RUNG CODE.

Loading Tables for Aluminum Lad-

A (C) E1 Use ALE1 fittings

NEMA 20C+, 16C+, 12C+



Span (ft.)	12		14		16		18		20	
Width (in.)	Load	Defl	Load	Defl	Load	Defl	Load	Defl	Load	Defl
6	314	1.27	231	1.73	177	2.26	140	2.86	113	3.53
9	314	1.27	231	1.73	177	2.26	140	2.86	113	3.53
12	314	1.27	231	1.73	177	2.26	140	2.86	113	3.53
18	314	1.27	231	1.73	177	2.26	140	2.86	113	3.53
24	248*	1.00	231	1.73	177	2.26	140	2.86	113	3.53
30	199*	0.81	199*	1.49	177	2.26	140	2.86	113	3.53
36	166*	0.67	166*	1.24	166*	2.12	140	2.86	113	3.53

COVER BAR CLAMP: HC-W-E

STS. E-18A / FITT. E-18A / RUNG E-1A2 / (E-1A) 18" RS / TIG WELD

ALUM: CA3F (FLANGED), CA3C (CORRUGATED SOLID), CA3S (FLAT SOLID), CA3V (CORRUGATED VENTILATED)
 STAINLESS STEEL: 304SS C43F (FLANGED), C43S (FLAT SOLID) / 316SS C63F (FLANGED), C63S (FLAT SOLID)

UL EGC AMPERAGE RATING: STRAIGHTS = 2000 AMPS / FITTINGS 2000 AMPS

A (C) E7 Use ALE7 fittings

NEMA 20B+, 16C+, 12C+



Span (ft.)	12		14		16		18		20	
Width (in.)	Load	Defl	Load	Defl	Load	Defl	Load	Defl	Load	Defl
6	261	0.74	192	1.00	147	1.30	116	1.65	94	2.04
9	261	0.74	192	1.00	147	1.30	116	1.65	94	2.04
12	261	0.74	192	1.00	147	1.30	116	1.65	94	2.04
18	261	0.74	192	1.00	147	1.30	116	1.65	94	2.04
24	248*	0.56	192	1.00	147	1.30	116	1.65	94	2.04
30	199*	0.56	192	1.00	147	1.30	116	1.65	94	2.04
36	166*	0.47	166*	0.87	147	1.30	116	1.65	94	2.04

COVER BAR CLAMP: HC-W-E71

STS. E-79A2 / FITT. E-79A2 / RUNG E-1A2 / (E-1A) 18" RS / TIG WELD

ALUM: CA3F (FLANGED), CA3C (CORRUGATED SOLID), CA3S (FLAT SOLID), CA3V (CORRUGATED VENTILATED)
 STAINLESS STEEL: 304SS C43F (FLANGED), C43S (FLAT SOLID) / 316SS C63F (FLANGED), C63S (FLAT SOLID)

UL EGC AMPERAGE RATING: STRAIGHTS = 2000 AMPS / FITTINGS 2000 AMPS

A (C) E71 Use ALE7 fittings

NEMA 20C+, 16C+, 12C+



Span (ft.)	12		14		16		18		20	
Width (in.)	Load	Defl	Load	Defl	Load	Defl	Load	Defl	Load	Defl
6	317	0.79	233	1.07	178	1.40	141	1.77	114	2.19
9	317	0.79	233	1.07	178	1.40	141	1.77	114	2.19
12	317	0.79	233	1.07	178	1.40	141	1.77	114	2.19
18	317	0.79	233	1.07	178	1.40	141	1.77	114	2.19
24	248*	0.62	233	1.07	178	1.40	141	1.77	114	2.19
30	199*	0.50	199*	0.91	178	1.40	141	1.77	114	2.19
36	166*	0.41	166*	0.76	178	1.40	141	1.77	114	2.19

COVER BAR CLAMP: HC-W-E71

STS. E-79A / FITT. E-79A2 / RUNG E-1A2 / (E-1A) 18" RS / TIG WELD

ALUM: CA3F (FLANGED), CA3C (CORRUGATED SOLID), CA3S (FLAT SOLID), CA3V (CORRUGATED VENTILATED)
 STAINLESS STEEL: 304SS C43F (FLANGED), C43S (FLAT SOLID) / 316SS C63F (FLANGED), C63S (FLAT SOLID)

UL EGC AMPERAGE RATING: STRAIGHTS = 2000 AMPS / FITTINGS 2000 AMPS

Corrugated Covers (C) & (V) are for straight sections and vertical fittings ONLY

NOTE: ALL ALUM 36" WIDE AND WIDER STRAIGHT SECTIONS WITH 18" RUNG SPACING AND ALL 36" WIDE FITTINGS WILL GET THE HEAVY E-1A RUNG. ALL 30" AND WIDER VERTICAL OUTSIDE BENDS WILL ALSO GET THE E-1A RUNG. THIS HAS BEEN PROGRAMMED AND QUOTE DEPARTMENT DOESN'T NEED TO USE A RUNG CODE.

Loading Tables for Steel Ladder

S () B2 Use SLB2 fittings
NEMA 12B+ 16 Gauge



Span (ft.)	4		6		8		10		12	
Width (in.)	Load	Defl	Load	Defl	Load	Defl	Load	Defl	Load	Defl
6	810	0.09	360	0.20	203	0.35	130	0.55	90	0.71
9	810	0.09	360	0.20	203	0.35	130	0.55	90	0.71
12	562*	0.06	360	0.20	203	0.35	130	0.55	90	0.71
18	375*	0.04	360	0.20	203	0.35	130	0.55	90	0.71
24	281*	0.03	281*	0.16	203	0.35	130	0.55	90	0.71
30	225*	0.03	225*	0.13	203	0.35	130	0.55	90	0.71
36	187*	0.02	187*	0.10	187*	0.32	130	0.55	90	0.71

COVER BAR CLAMP: HC-W-B2

STS. E-20S125 / FITT. E-20S125 / RUNG E-40S18 / MIG WELD

PREGAL: CS5F2 (FLANGED), CS5C (CORRUGATED SOLID), CS5S2 (FLAT SOLID), CS5V (CORRUGATED VENTILATED)
 HDGAF: CG5F8 (FLANGED), CG5S8 (FLAT SOLID) (6' MAX LENGTH)
 STAINLESS STEEL: 304SS C45F (FLANGED), C45S (FLAT SOLID) / 316SS C65F (FLANGED), C65S (FLAT SOLID)

UL EGC AMPERAGE RATING: STRAIGHTS = 100 AMPS / FITTINGS 100 AMPS

S () FC Use SLFC fittings
NEMA 12C+ 16 Gauge



Span (ft.)	4		6		8		10		12	
Width (in.)	Load	Defl	Load	Defl	Load	Defl	Load	Defl	Load	Defl
6	1124*	0.09	580	0.23	326	0.40	209	0.63	145	0.90
9	749*	0.06	580	0.23	326	0.40	209	0.63	145	0.90
12	562*	0.05	580	0.23	326	0.40	209	0.63	145	0.90
18	375*	0.03	375*	0.15	326	0.40	209	0.63	145	0.90
24	281*	0.02	281*	0.11	248	0.42	209	0.63	145	0.90
30	225*	0.02	225*	0.09	225*	0.29	209	0.63	145	0.90
36	187*	0.02	187*	0.07	187*	0.23	187*	0.56	145	0.90

COVER BAR CLAMP: HC-W-B2

STS. E-66S125 / FITT. E-66S2b / RUNG E-40S18 / MIG WELD

PREGAL: CS5F2 (FLANGED), CS5C (CORRUGATED SOLID), CS5S2 (FLAT SOLID), CS5V (CORRUGATED VENTILATED)
 HDGAF: CG5F8 (FLANGED), CG5S8 (FLAT SOLID) (6' MAX LENGTH)
 STAINLESS STEEL: 304SS C45F (FLANGED), C45S (FLAT SOLID) / 316SS C65F (FLANGED), C65S (FLAT SOLID)

UL EGC AMPERAGE RATING: STRAIGHTS = 200 AMPS / FITTINGS 100 AMPS

S () CD Use SLCD fittings
NEMA 20A, 16B+, 12C+ 16 Gauge



Span (ft.)	12		14		16		18		20	
Width (in.)	Load	Defl	Load	Defl	Load	Defl	Load	Defl	Load	Defl
6	147	0.77	108	1.05	83	1.37	65	1.74	53	2.15
9	147	0.77	108	1.05	83	1.37	65	1.74	53	2.15
12	147	0.77	108	1.05	83	1.37	65	1.74	53	2.15
18	147	0.77	108	1.05	83	1.37	65	1.74	53	2.15
24	147	0.77	108	1.05	83	1.37	65	1.74	53	2.15
30	147	0.77	108	1.05	83	1.37	65	1.74	53	2.15
36	147	0.77	108	1.05	83	1.37	65	1.74	53	2.15

COVER BAR CLAMP: HC-W-CD

STS. E-45S2 / FITT. E-45S / RUNG E-40S18 / MIG WELD

PREGAL: CS3F2 (FLANGED), CS3C (CORRUGATED SOLID), CS3S2 (FLAT SOLID), CS3V (CORRUGATED VENTILATED)
 HDGAF: CG3F8 (FLANGED), CG3S8 (FLAT SOLID) (6' MAX LENGTH)
 STAINLESS STEEL: 304SS C43F (FLANGED), C43S (FLAT SOLID) / 316SS C63F (FLANGED), C63S (FLAT SOLID)

UL EGC AMPERAGE RATING: STRAIGHTS = 200 AMPS / FITTINGS 200 AMPS

Corrugated Covers (C) & (V) are for straight sections and vertical fittings ONLY

Loading Tables for Steel Ladder

S () P61 Use SLP61 fittings

NEMA 12C+ 16 Gauge



Span (ft.)	4		6		8		10		12	
Width (in.)	Load	Defl	Load	Defl	Load	Defl	Load	Defl	Load	Defl
6	1124*	0.05	520	0.12	293	0.21	187	0.33	130	0.48
9	749*	0.03	520	0.12	293	0.21	187	0.33	130	0.48
12	562*	0.03	520	0.12	293	0.21	187	0.33	130	0.48
18	375*	0.02	375*	0.09	293	0.21	187	0.33	130	0.48
24	281*	0.01	281*	0.07	196	0.17	187	0.33	130	0.48
30	225*	0.01	225*	0.05	196	0.17	187	0.33	130	0.48
36	187*	0.01	187*	0.04	187*	0.13	187	0.33	130	0.48

COVER BAR CLAMP: HC-W-P61

STS. E-3361 / FITT. E-33S612B / RUNG E-40S18 / MIG WELD

PREGAL: CS7F2 (FLANGED), CS7C (CORRUGATED SOLID), CS7S2 (FLAT SOLID), CS7V (CORRUGATED VENTILATED)
 HDGAF: CG7F8 (FLANGED), CG7S8 (FLAT SOLID) (6' MAX LENGTH)
 STAINLESS STEEL: 304SS C47F (FLANGED), C47S (FLAT SOLID) / 316SS C67F (FLANGED), C67S (FLAT SOLID)

UL EGC AMPERAGE RATING: STRAIGHTS = 200 AMPS / FITTINGS 200 AMPS

S () PD4 Use SLPD4 fittings

NEMA 12C+ 14 Gauge



Span (ft.)	4		6		8		10		12	
Width (in.)	Load	Defl	Load	Defl	Load	Defl	Load	Defl	Load	Defl
6	1124*	0.04	749*	0.15	450	0.30	288	0.47	200	0.67
9	749*	0.03	749	0.15	450	0.30	288	0.47	200	0.67
12	562*	0.02	562*	0.11	450	0.30	288	0.47	200	0.67
18	375*	0.01	375*	0.08	375*	0.25	288	0.47	200	0.67
24	281*	0.01	281*	0.06	281*	0.19	288	0.47	200	0.67
30	225*	0.01	225*	0.05	225*	0.15	225*	0.37	200	0.67
36	187*	0.01	187*	0.04	187*	0.13	187*	0.31	187*	0.63

COVER BAR CLAMP: HC-W-PB1

STS. E-34S / FITT. E-33S / RUNG E-40S18 / MIG WELD

PREGAL: CS2F2 (FLANGED), CS2C (CORRUGATED SOLID), CS2S2 (FLAT SOLID), CS2V (CORRUGATED VENTILATED)
 HDGAF: CG2F8 (FLANGED), CG2S8 (FLAT SOLID) (6' MAX LENGTH)
 STAINLESS STEEL: 304SS C42F (FLANGED), C42S (FLAT SOLID) / 316SS C62F (FLANGED), C62S (FLAT SOLID)

UL EGC AMPERAGE RATING: STRAIGHTS = 200 AMPS / FITTINGS 200 AMPS

S () EB Use SLEB fittings

NEMA 20B+, 16C, 12C/CSA D



Span (ft.)	12		14		16		18		20	
Width (in.)	Load	Defl	Load	Defl	Load	Defl	Load	Defl	Load	Defl
6	236	0.71	173	0.97	133	1.27	105	1.61	85	1.99
9	236	0.71	173	0.97	133	1.27	105	1.61	85	1.99
12	236	0.71	173	0.97	133	1.27	105	1.61	85	1.99
18	236	0.71	173	0.97	133	1.27	105	1.61	85	1.99
24	236	0.71	173	0.97	133	1.27	105	1.61	85	1.99
30	225*	0.68	173	0.97	133	1.27	105	1.61	85	1.99
36	187*	0.56	173	0.97	133	1.27	105	1.61	85	1.99

COVER BAR CLAMP: HC-W-EB

STS. E-73S / FITT. E-73S-2B / RUNG E-40S18 / MIG WELD

PREGAL: CS3F2 (FLANGED), CS3C (CORRUGATED SOLID), CS3S2 (FLAT SOLID), CS3V (CORRUGATED VENTILATED)
 HDGAF: CG3F8 (FLANGED), CG3S8 (FLAT SOLID) (6' MAX LENGTH)
 STAINLESS STEEL: 304SS C43F (FLANGED), C43S (FLAT SOLID) / 316SS C63F (FLANGED), C63S (FLAT SOLID)

UL EGC AMPERAGE RATING: STRAIGHTS = 400 AMPS / FITTINGS 400 AMPS

Corrugated Covers (C) & (V) are for straight sections and vertical fittings ONLY

Loading Tables for Steel Lad-

S () ED 14 Gauge
Use SLED fittings

NEMA 24C, 20C+



COVER BAR CLAMP: HC-W-E

Span (ft.)	12		16		20		22		24	
Width (in.)	Load	Defl	Load	Defl	Load	Defl	Load	Defl	Load	Defl
6	380	0.75	214	1.32	137	2.07	113	2.35	95	2.98
9	380	0.75	214	1.32	137	2.07	113	2.35	95	2.98
12	380	0.75	214	1.32	137	2.07	113	2.35	95	2.98
18	375*	0.74	214	1.32	137	2.07	113	2.35	95	2.98
24	281*	0.56	214	1.32	137	2.07	113	2.35	95	2.98
30	225*	0.44	214	1.32	137	2.07	113	2.35	95	2.98
36	187*	0.37	187*	1.15	137	2.07	113	2.35	95	2.98

STS. E-77S / FITT. E-77S-2B / RUNG E-40S18 / MIG WELD

PREGAL: CS3F2 (FLANGED), CS3C (CORRUGATED SOLID), CS3S2 (FLAT SOLID), CS3V (CORRUGATED VENTILATED)
 HDGAF: CG3F8 (FLANGED), CG3S8 (FLAT SOLID) (6' MAX LENGTH)
 STAINLESS STEEL: 304SS C43F (FLANGED), C43S (FLAT SOLID) / 316SS C63F (FLANGED), C63S (FLAT SOLID)

UL EGC AMPERAGE RATING: STRAIGHTS = 400 AMPS / FITTINGS 400 AMPS

S () PD7 Use SLPD7 fittings

NEMA 12C 16 Gauge



COVER BAR CLAMP: HC-W-PD7

Span (ft.)	4		6		8		10		12	
Width (in.)	Load	Defl	Load	Defl	Load	Defl	Load	Defl	Load	Defl
6	900	0.03	400	0.07	225	0.12	144	0.19	100	0.28
9	749*	0.05	400	0.07	225	0.12	144	0.19	100	0.28
12	562*	0.02	400	0.07	225	0.12	144	0.19	100	0.28
18	375*	0.01	375*	0.09	225	0.12	144	0.19	100	0.28
24	281*	0.01	281*	0.07	225	0.12	144	0.19	100	0.28
30	225*	0.01	225*	0.05	225	0.12	144	0.19	100	0.28
36	187*	0.01	187*	0.05	187*	0.10	144	0.19	100	0.28

STS. E-34S27 / FITT. E-33S27-2B / RUNG E-40S18 / MIG WELD

PREGAL: CS2F2 (FLANGED), CS2C (CORRUGATED SOLID), CS2S2 (FLAT SOLID), CS2V (CORRUGATED VENTILATED)
 HDGAF: CG2F8 (FLANGED), CG2S8 (FLAT SOLID) (6' MAX LENGTH)
 STAINLESS STEEL: 304SS C42F (FLANGED), C42S (FLAT SOLID) / 316SS C62F (FLANGED), C62S (FLAT SOLID)

UL EGC AMPERAGE RATING: STRAIGHTS = 400 AMPS / FITTINGS 400 AMPS

S () PD74 Use SLPD74 fittings

NEMA 12C+ 14 Gauge



COVER BAR CLAMP: HC-W-PD7

Span (ft.)	4		6		8		10		12	
Width (in.)	Load	Defl	Load	Defl	Load	Defl	Load	Defl	Load	Defl
6	1124*	0.04	840	0.12	473	0.21	302	0.33	210	0.47
9	749*	0.03	749*	0.11	473	0.21	302	0.33	210	0.47
12	562*	0.02	562*	0.08	473	0.21	302	0.33	210	0.47
18	375*	0.01	375*	0.05	375*	0.17	302	0.33	210	0.47
24	281*	0.01	281*	0.04	281*	0.13	281*	0.31	210	0.47
30	225*	0.01	225*	0.03	225*	0.10	225*	0.25	210	0.47
36	187*	0.01	187*	0.03	187*	0.08	187*	0.20	187*	0.42

STS. E-34S7 / FITT. E-34S7-2B / RUNG E-40S18 / MIG WELD

PREGAL: CS2F2 (FLANGED), CS2C (CORRUGATED SOLID), CS2S2 (FLAT SOLID), CS2V (CORRUGATED VENTILATED)
 HDGAF: CG2F8 (FLANGED), CG2S8 (FLAT SOLID) (6' MAX LENGTH)
 STAINLESS STEEL: 304SS C42F (FLANGED), C42S (FLAT SOLID) / 316SS C62F (FLANGED), C62S (FLAT SOLID)

UL EGC AMPERAGE RATING: STRAIGHTS = 400 AMPS / FITTINGS 400 AMPS

Corrugated Covers (C) & (V) are for straight sections and vertical fittings ONLY

Loading Tables for Steel Lad-

S **(C)** **EB7** Use SLEB7 fittings

NEMA 24B+, 20C+

16 Gauge



Span (ft.)	12		16		20		22		24	
Width (in.)	Load	Defl	Load	Defl	Load	Defl	Load	Defl	Load	Defl
6	380	0.67	214	1.19	137	1.86	103	2.05	86	2.44
9	380	0.67	214	1.19	137	1.86	103	2.05	86	2.44
12	380	0.67	214	1.19	137	1.86	103	2.05	86	2.44
18	375*	0.66	214	1.19	137	1.86	103	2.05	86	2.44
24	281*	0.50	214	1.19	137	1.86	103	2.05	86	2.44
30	225*	0.40	214	1.19	137	1.86	103	2.05	86	2.44
36	187*	0.33	187*	1.04	137	1.86	103	2.05	86	2.44

COVER BAR CLAMP: HC-W-E71

STS. E-106S2 / FITT. E-106S2-2B / RUNG E-40S18 / MIG WELD

PREGAL: CS3F2 (FLANGED), CS3C (CORRUGATED SOLID), CS3S2 (FLAT SOLID), CS3V (CORRUGATED VENTILATED)

HDGAF: CG3F8 (FLANGED), CG3S8 (FLAT SOLID) (6' MAX LENGTH)

STAINLESS STEEL: 304SS C43F (FLANGED), C43S (FLAT SOLID) / 316SS C63F (FLANGED), C63S (FLAT SOLID)

UL EGC AMPERAGE RATING: STRAIGHTS = 400 AMPS / FITTINGS 400 AMPS

S **(C)** **EC7** Use SLEC7 fittings

NEMA 20C

14 Gauge



Span (ft.)	12		14		16		18		20	
Width (in.)	Load	Defl	Load	Defl	Load	Defl	Load	Defl	Load	Defl
6	292	0.44	214	0.59	164	0.77	130	0.98	105	1.21
9	292	0.44	214	0.59	164	0.77	130	0.98	105	1.21
12	292	0.44	214	0.59	164	0.77	130	0.98	105	1.21
18	292	0.44	214	0.59	164	0.77	130	0.98	105	1.21
24	281*	0.42	214	0.59	164	0.77	130	0.98	105	1.21
30	225*	0.34	214	0.59	164	0.77	130	0.98	105	1.21
36	187*	0.28	187*	0.52	164	0.77	130	0.98	105	1.21

COVER BAR CLAMP: HC-W-E71

STS. E-106S / FITT. E-106S-2B / RUNG E-40S18 / MIG WELD

PREGAL: CS3F2 (FLANGED), CS3C (CORRUGATED SOLID), CS3S2 (FLAT SOLID), CS3V (CORRUGATED VENTILATED)

HDGAF: CG3F8 (FLANGED), CG3S8 (FLAT SOLID) (6' MAX LENGTH)

STAINLESS STEEL: 304SS C43F (FLANGED), C43S (FLAT SOLID) / 316SS C63F (FLANGED), C63S (FLAT SOLID)

UL EGC AMPERAGE RATING: STRAIGHTS = 400 AMPS / FITTINGS 400 AMPS

Corrugated Covers (C) & (V) are for straight sections and vertical fittings ONLY